

Table of Contents

3.....	Welcome
4 - 6	Acclaim™hp Specifications/Exposure Schedule
7.....	Warnings and Cautions
8.....	Repairs
8.....	Service
8.....	Replacement Parts and Lamps
8.....	Eye Protection
9.....	Care and Cleaning
10 - 18	Timer System
19 - 25	Wiring Diagrams
26 - 28	Assembly Instructions
29.....	Limited Warranty

America's Best Tan™

Welcome

Dear Valued Customer:

Congratulations! You have just purchased one of the finest pieces of tanning equipment available to the indoor tanning industry. We at Heartland Tanning, Inc. sincerely appreciate your business.

The Acclaim™ hp beds are manufactured right here in the heart of our country. Our tanning beds are constructed of 12GAUGE solid steel and is designed to hold up under heavy use. We have confidence in our manufactured products and that is why our equipment is backed by Heartland's unprecedented 3 year limited warranty. Designed to be user friendly, the Acclaim™ hp is easy to assemble and maintain.

Please read your owner & assembly manual thoroughly prior to the first use of your new tanning bed.

Heartland Tanning, Inc.
4251 N.E. Port Drive
Lee's Summit, MO 64064
1-800-554-8268

America's Best Tan™

NOTICE: Any misuse, abuse, modifications, alteration, improper installation, etc. of this product or its intended use will subject said party to direct responsibility for any and all consequences resulting from such action. Furthermore, such actions will void all warranties and may relieve Heartland Tanning, Inc. of any liabilities relating to said product.

SPECIFICATIONS

ACCLAIM™ hp

DIMENSIONS:	104"W x 78"D x 61.25"H
WEIGHT:	1800LBS
NUMBER OF LAMPS:	32 - 600 watt, 3 - 1,000 watt
ELECTRICAL DRAW:	100 AMPS - 220 VOLTS, 125 AMPS - 250 VOLTS
CIRCUIT REQUIRED:	3 PHASE, 100 AMP LOAD at 220 VOLTS, 125 AMP at 240 VOLTS

*NOTE: Amperage will vary depending on voltage.

DANGER – ULTRAVIOLET RADIATION. Follow instructions. Avoid overexposure. As with natural sunlight, overexposure can cause eye and skin injury and allergic reactions. Repeated exposure may cause premature aging of the skin and skin cancer. **Wear protective eyewear: failure to may result in severe burns or long-term injury to eyes.**

Medications or cosmetics may increase your sensitivity to the ultraviolet radiation. Consult physician before using sunlamp if you are using medications or have a history of skin problems or believe yourself especially sensitive to sunlight. If you do not tan in the sun, you are unlikely to tan from the use of this product.

This system is intended to be used only with 32 - LT/LSI MA4046HS 600 W, 3 - LT/LSI MA4051HE 1,000W
Follow recommended exposure schedule for the skin type.

RECOMMENDED EXPOSURE SCHEDULE

Skin Type	Week 1 1st - 3rd Treatments	Week 2 4th - 6th Treatments	Week 3 7th - 10th Treatments	Week 4 11th - 15th Treatments	BI-Weekly Subsequent Treatments
II - Fair	2MINUTES	3MINUTES	5MINUTES	9MINUTES	12MINUTES
III - Average	2MINUTES	3MINUTES	5MINUTES	9MINUTES	12MINUTES
IV - Brown	2MINUTES	5MINUTES	7MINUTES	11MINUTES	12MINUTES
V - Dark Brown	2MINUTES	5MINUTES	7MINUTES	12MINUTES	12MINUTES

This unit utilizes UVA lamps. Replace only with **LT/LSI MA4046HS 600 W, 3 - LT/LSI MA4051HE 1,000W lamps**. To obtain the recommended exposure position of 6" (15.2 CM) measured with a standard ruler, stand in the center of the unit. **Caution: The use of any other position may result in overexposure.** Read the instruction booklet before using this devise.

Tanning can begin on a regular basis. An appearance of tanning normally appears after a few exposures and maximizes after four (4) weeks of exposure.

Use protective eyewear whenever equipment is energized. Read the instruction booklet before using.

INSTRUCTIONS ACCOMPANYING THIS PRODUCT SHOULD ALWAYS BE FOLLOWED TO AVOID OR MINIMIZE POTENTIAL INJURY.

"This product is in conformity with performance standards for sunlamp products under CFR part 1040"

EXPOSURE TIME AND FREQUENCIES

MELANIN - The brownish pigment produced by special cells in the base layer of the skin determines the individual's tan. As the skin is exposed to the ultraviolet light, the melanin is activated and combines with protein cells that rise to the skin's surface, thus producing a tan. The amount of melanin in your body determines how quickly and dark you tan. The more melanin produced and exposure time an individual has, the faster and deeper the individual will tan.

NOTE:

The tan produced by the Acclaim™hp is a deep, rich "COSMETIC" tan. However, regardless of how dark an individual may tan on this system, it will not provide adequate protections against overexposure to natural sunlight or UVB tanning systems.

SKIN TYPE II - This is the individual that usually burns easily and severely, tans minimally or lightly and peels

SKIN TYPE III - Often referred to as "AVERAGE" complexion, burns moderately and tans about average

SKIN TYPE IV - This individual burns minimally, tans easily and above average with each exposure

SKIN TYPE V - This individual's system rarely burns, tans easily and substantially

RECOMMENDED EXPOSURE SCHEDULE

Skin Type	Week 1 1st - 3rd Treatments	Week 2 4th - 6th Treatments	Week 3 7th - 10th Treatments	Week 4 11th - 15th Treatments	Weekly Subsequent Treatments
II - Fair	2MINUTES	3MINUTES	5MINUTES	9MINUTES	12MINUTES
III - Average	2MINUTES	3MINUTES	5MINUTES	9MINUTES	12MINUTES
IV - Brown	2MINUTES	5MINUTES	7MINUTES	11MINUTES	12MINUTES
V - Dark Brown	2MINUTES	5MINUTES	7MINUTES	11MINUTES	12MINUTES

MAXIMUM EXPOSURE TIME IS 12 MINUTES

No two individuals skin tones are the same. A tan to one person may be different to another and treatment length may vary.

IMPORTANT NOTE:

Customers that wear contact lenses, should be made aware that the heat and ventilation wind may dry out their contacts and should be removed prior to the session.

It is recommended that you do not use any creams, oils or lotions (particularly suntan lotions) that are not recommended by Heartland Tanning, Inc. Equally important – many facial makeups have oil bases and should be removed prior to a session.

It is recommended that following a tanning session, a skin moisturizer be applied. This promotes a smoother, more even looking tan.

Caractéristiques

ACCLAIM™hp

longueur : 104"W x 78"D x 61.25"H
poids d'expédition : 1800 livres
nombre de lampes : 32 - 600 watt, 3 - 1,000 watt
aspiration électrique : 100 AMPS - 220 VOLTS, 125 AMPS - 250 VOLTS
circuit requis : 3 PHASE, 100 AMP LOAD at 220 VOLTS, 125 AMP at 240 VOLTS

*NOTE: Amperage will vary depending on voltage.

DANGER – RAYONNEMENT ULTRAVIOLET. Suivez les instructions. Évitez la surexposition. Comme avec les rayons naturels du soleil, la surexposition peut causer dommage aux yeux et à la peau et des réactions allergiques. L'exposition répétée peut causer le vieillissement prématuré de la peau et du cancer de la peau. **Portez des lunettes protectrices; le non-respect de cette consigne peut entraîner de graves brûlures ou des lésions oculaires à long terme.**

Les médicaments ou les produits de beauté peuvent augmenter votre sensibilité au rayonnement ultraviolet. Consultez un médecin avant d'utiliser la lampe solaire si vous utilisez des médicaments ou avez une histoire des problèmes de peau ou croyez-vous particulièrement sensibles aux rayons du soleil. Si vous ne bronzes pas au soleil, il est peu probable que vous bronzerez avec l'utilisation de ce produit.

Questions au sujet des ventes ou de service : Heartland Tanning, Inc. • Lee's Summit, MO – 1-800-554-8268

Suivez le programme recommandé d'exposition pour le type de peau.

Cette appareil utilise des lampes de l'ultra-violet A. Remplacez seulement avec les lampes de marque 32 - LT/LSI MA4046HS 600 W, 3 - LT/LSI MA4051HE 1,000W. La position minimum d'exposition est à 0,5 pouces 1,27 cm) de la surface de la lampe (instituez par le manufacturier). Lisez le livret d'instruction avant d'utiliser ce dispositif. Pour utiliser, couchez-vous sous l'écran et abaissez dans la mesure où le réglage laissera. ATTENTION : L'UTILISATION DE N'IMPORTE QUELLE AUTRE POSITION PEUT AVOIR COMME CONSÉQUENCE LA SUREXPOSITION.

Le bronzage peut commencer de façon régulière. Un aspect de bronzage normalement apparaît après quelques expositions et atteint son niveau maximal après quatre (4) semaines d'exposition. **Utilisez des lunettes protectrice à chaque fois que l'appareil est active. Lisez le livret d'instructions avant l'utilisation.**

Horaire d'exposition recommandé					
Type de peau	Semaine 1 1er – 3e Traitements	Semaine 2 4e – 6e Traitements	Semaine 3 7e – 10e Traitements	Semaine 4 11e – 15e Traitements	Bihebdomadaire Traitements subséquents
II – Claire	2 MINUTES	3 MINUTES	5 MINUTES	9 MINUTES	12 MINUTES
III – Moyen	2 MINUTES	3 MINUTES	5 MINUTES	9 MINUTES	12 MINUTES
IV – Foncé	2 MINUTES	5 MINUTES	7 MINUTES	11 MINUTES	12 MINUTES
V – Très foncé	2 MINUTES	5 MINUTES	7 MINUTES	11 MINUTES	12 MINUTES
LE TEMPS MAXIMUM D'EXPOSITION EST DE 12 MINUTES					
Ce produit est conforme aux normes de rendement pour des produits de lampe de soleil tel que stipule la partie 1040 du document CFR 21.					



WARNINGS AND CAUTIONS

Certain drugs – particularly those designed to produce photosensitivity – may cause individuals under the influence of this type drug to experience adverse effects and those people should avoid exposure to UV sources of all kinds. Doctors will advise persons taking these drugs of possible adverse effects.

It is recommended that only one (1) person at a time should use the tanning system while in use, and advise using protective eyewear while taking a tanning session. Two (2) pair of goggles are provided with each Acclaim™hp.

WARNING

If you have been diagnosed by physician as being allergic to the sun or are currently taking photosensitive medications, consult your physician before using the tanning unit.

CAUTION

While there is no immediate clinical evidence regarding UVA exposure and its effects upon expectant mothers, it is strongly advised that expectant mothers be discouraged from using the tanning unit.

MANDATORY READING

ALWAYS FOLLOW INSTRUCTIONS FOR PROPER USAGE PRIOR TO USING ANY TANNING SYSTEM

REMEMBER

1. Follow the exposure schedule in accordance with your skin type. Failure to do so may result in over-exposure.
2. **You can not vary the strength of the lamps in your unit.**

Should you have any question regarding the proper use of your tanning system, contact Heartland Tanning, Inc. at:

1-800-554-8268
8:00AM to 5:00PM (CST)

REPAIRS - SERVICE - REPLACEMENT PARTS AND LAMPS - EYE PROTECTION

If you are in need of any of the above mentioned products or services, you should contact the dealer/distributor through whom you purchased your unit. In the event that you are unable to do so, please call our Service Department for assistance at: 1-800-554-8268.

NOTE: All repairs and replacement components including, but not limited to, protective eyewear, lamps, timers and acrylic must be in compliance with CFR21 1040.20.

**NOTE: Electrical connection to power supply,
must be in compliance with NECA
regulations and performed by
a qualified electrician.**

Warning:
**Wear protective eyewear; failure to may result
in severe burns or long-term injury to eyes.**

America's Best TanTM

CARE AND CLEANING OF YOUR ACCLAIM™hp

After each session is completed, spray the bench acrylic with Acrylic Cleaner, a specially formulated UVT (ultra-violet transmitting) Acrylic Cleaner. Spray and clean the acrylic. Wipe the bench and acrylic with a clean cloth. The acrylic should never be wiped with a dry cloth because this will generate a slight static charge which will attract dust. A mild liquid detergent and water solution can be used temporarily in place of Acrylic Cleaner.

For maximum efficiency of your Acclaim™hp periodic cleaning of lamps is required. Refer to relamping instructions for acrylic removal.

CAUTION: Do not use excessive amounts of water, any abrasive cleaners, or any spray cleaner that carry label warnings regarding reactions to contact with skin!

DO NOT USE ALCOHOL

ELECTRICAL SAFETY: The tanning unit should be disconnected from the power supply before cleaning or any repairs are made! Avoid water or solution entering the lamp compartment.

RELAMPING INSTRUCTIONS

Acclaim™hp

1. Disconnect power from unit.
2. Using access key provided unlock and open acrylic door.
3. Snap open blue glass door
4. Grasp HI Pressure lamp at the end. Pull lamp removing it from lamp holder.
5. Remove lamp from box and wrapper. Position lamp in lamp holder and push in to lock.
 - a. Note: Lamp pins are different sizes (position large end of lamp in the large end of the lamp holder)
6. Follow above steps for all additional lamps in column.
7. Wipe each lamp (glass portion with a clean towel and alcohol.
8. Snap blue glass door closed.
9. Close and lock acrylic door.
10. Follow all above steps on remaining columns.

LAMP GUIDE

Acclaim™hp - Replacement lamps must comply with CFR 21 1040.20
Replace only with 32 - LT/LSI MA4046HS 600 W, 3 - LT/LSI MA4051HE 1,000W

USE AND GUIDE TO TIMER SYSTEM

The information in this manual is believed to be correct. However, Applied Digital, Inc. assumes no responsibility for any errors herein. This information is subject to change without notice, and should not be construed as a commitment by Applied Digital, Inc. A factory 6 second delay between all functions is standard on Acclaim™hp Timer.

TIMER WARRANTY

This product is warranted against defective materials and workmanship for a period of one year from date of purchase. In the event the product fails to perform, it may be returned; Shipping Paid, to the factory to be serviced or replaced at the factory's discretion. Applied Digital, Inc. will pay to ship the repaired or replaced product by the shipping means of our choosing. Returns will not be accepted without a Return Authorization Number assigned by the factory. It is a Condition of Sale that the user of Applied Digital, Inc.'s products assumes all risk and responsibility of use and indemnifies Applied Digital, Inc. against all damages. Applied Digital, Inc. is not liable for loss of profits, loss savings, special, incidental, consequential, indirect or other similar damages arising from breach of warranty, breach of contract, negligence, or other legal action even if Applied Digital, Inc. or its agent has been advised of the possibility of such damages, or for any claim brought against you by another party. This warranty allocates risks of product failure between the Purchaser and Applied Digital, Inc. Applied Digital, Inc.'s hardware pricing reflects this allocation of risk and the limitations of liability contained in this warranty. It is a violation of the stated warranty to cut or modify the provided modular cables supplied with the T-Max Series Timers. Connection the T-Max Series to third party timers not approved by Applied Digital, Inc. also violates the stated warranty. Contact your dealer or Applied Digital, Inc. if you are not sure if the timer that you are connection is an approved timer.

T-Max/Acclaim™ Timer Installation and User's Guide

OVERVIEW

Congratulations on your purchase of Applied Digital, Inc.'s T-Max Series of tanning bed timers. The T-Max Series is designed for complete automation and control of your tanning equipment.

An Acclaim™hp Timer is an OEM board that can be installed in a tanning bed or tanning booth. Each Acclaim™hp Timer can individually control a tanning bed, can be connected back-to-back with a T-Max 1A or T-Max 3A for remote front desk control or be connected with many Acclaim™hp Timers and a T-Max Manager or Manager/Plus to control many beds from a remote location. Operation is accomplished via front panel controls. This manual should be used by the licensed electrician installing your T-Max timing system. Check for compliance with local building codes.

CONFIGURATION

Setting Bed Address

Note: If you are using a T-Max Manager or T-Max Manager/Plus and multiple Acclaim™hp Timers, remove power from the T-Max Manager or T-Max Manager/Plus and keep the power removed until all parameter changes are complete.

1. Press and hold the A/C button on the Acclaim™hp Timer. As soon as you see a "Total Bed Hours" release the button. This should take about 5-6 seconds.
2. Press the Fan Up button until the "Bed Address" screen is displayed..

3. Following the directions displayed, press the TIME UP button to advance in number. Press the TIME DOWN button to decrease in number.
4. To exit the program mode and make the Acclaim™hp Timer available for the next session, press the A/C buttons until the display shows the Acclaim™hp screen.

The Acclaim™hp Timer is a user friendly sophisticated diagnostic tool that can be tailored to each user's personal needs. From the display the user can change the following preset functions:

1. **START/STOP** By pressing this button the user can start or pause a session. Note: Once a session has been started all timer buttons are locked until the startup sequence has finished. Also once a session has been paused the lamps will not restart until ready. This may take up to 3 minutes depending on temperature.
2. **TIME UP-TIME DOWN** When the unit is in manual mode these buttons are used to increase or decrease the session to the desired time. Once a session has started the TIME UP key has no function.
3. **FACE UP-FACE DOWN** The face down button is used to lower the output of the facial lamps from 1000watt to 600 watt to off. The face up button can be used to raise the facials from a lower setting. Note: Once the facials have been switched OFF, they will not cycle on until the lamps are ready. The display will show a 1 minute delay before the timer will attempt to restart the facials.
4. **SHOULDER** This button cycles the shoulder tanning lamps ON/OFF. Note: Shoulder Tanners are not available on the HIGH PRESSURE ACCLAIM™hp model.
5. **A/C** This buttons cycles the A/C OFF-ON. Note: Once the A/C has been cycled OFF it will not restart for a total of 4 minutes. The display will show a delay of 2 minutes and start to count down after the A/C cooling system has equalized.
6. **FAN UP/FAN DOWN** The Fan down button will lower the body fan speed from 5 (ultra hi) to 4 (hi) to 3 (med.) to 2 (low) to 1 (ultra low) to 0 (off). The Fan up button will raise the body fan speed to 5 (high). Note: Once the body fan speed has been lowered to a 2 (low) setting this will automatically cycle the A/C off. The A/C will cycle on only after the preset delay see #5 above.

The Salon Owner can monitor lamp hours, session's totals and Tailor specific functions on the Acclaim™hp Timer from their T-Max Manager. Level 3 security is required to "GET or SEND" parameters listed on page 12:

ACCLAIM™ hp PARAMETERS

Parameters not listed are unused

Parameter	Range	Function	Default	255 Reset
1	1 - 128, 254, 255	Unit Address	1	*
2		Beep Mode	0	
3	0 - 255	Session Delay in minutes	3	*
5		Sessions	0	
6	0 - 65535	Lamp Hours	0	
7	0 - 65535	Bed Hours	0	
8	0 - 65535	Manual Sessions	0	
9	0, 1	Dirty Function, 0 = off, 1 = on	1	*
10	0, 1	Key lock, 0 = off, 1 = on	0	
15	0 - 65535	Unchangeable Session Count	0	
18		Not Used	0	
19	0, 1	TPI Enable, 0 = off, 1 = on	0	
51	0 - 255	Fractional Lamp Hours	0	
52	0 - 255	Fractional Bed Hours	0	

ACCLAIM™ hp ERROR CODES

Error Code	Acclaim™ Display	Manager/ManagerPro Display
91	ERROR 91 Checksum Error!	E1
92	ERROR 92 The bed is on when it should be off	E2
93	ERROR 93 The bed is off when it should be on	E3
95	ERROR 95 ACRYLIC SWITCH OPEN or ERROR 95 FACIAL GLASS OPEN or ERROR 95 WATER PAN FULL or ERROR 95 SYSTEM VOLTAGE ERROR	E5
98	ERROR 98 Bed Temperature Exceeded	E8

To insure safety for the user and to protect the salon owners investment the Acclaim™hp Timer has multiple levels of protection. If a fault occurs the Acclaim™hp Timer will shut down and display the fault. If the salon is running on a T-Max system the front controlling timer will sound an alarm and display a fault. The display on the Acclaim™hp Timer will prompt you to reset if possible. If you have a fault that will not allow you to reset, cycle the power to the unit OFF and then back ON. If this still does not allow you to resume use refer to the owner's manual and any stored faults can be accessed from a T-Max controlling timer. The possible stored faults will be found in parameter 35 and 36.

These faults are listed below:

Parameter 35	Last Error
	92=Current On Error
	93=Current Off Error
	95=Special Error (check parameter 36 for details)
	98=Temperature Error
Parameter 36	Last Special Error Stored
	0=Facial Glass Safety Circuit Error
	1=Facial Glass door open/Airflow Switch Open
	2=Water Level Switch
	3=Voltage Error

Trouble shooting procedure:

0=Facial Glass Safety Circuit Error-Turn Power OFF before any type of maintenance is started.

1. Visually inspect each piece of facial glass for breakage-If any are found broken the unit cannot be used until replaced.
2. Open each facial glass door to inspect the terminal connections on the safety circuit attached to each piece of glass.
3. If no problem is found, contact the manufacture for assistance.

1=Facial Glass door open/Airflow Switch Open-Turn Power OFF before any type of maintenance is started.

1. Visually inspect each facial glass door to insure that they are snapped closed. This may require opening the acrylic door. If a door is found open, snap the door closed turn the power on to the unit and check the display to see if the fault reset.
2. If no problem is found, contact the manufacture for assistance.

2=Water Level Switch-Turn Power OFF before any type of maintenance is started.

1. Visually inspect the water pan located on the open side of the Air Conditioner box for standing water. If water is present, remove the top cover and remove the water present. Contact the manufacture for assistance.
2. If no problem is found, contact the manufacture for assistance.

3=Voltage Error-Turn Power OFF before any type of maintenance is started.

1. Cycle power OFF and then back ON. Check display to see if fault resets. IF the fault does not reset a voltage measurement will need to be taken at the control box. If voltage is above or below the preset value a Buck/Boost transformer may be needed.
2. If no problem is found, contact the manufacture for assistance.

REMOTE SINGLE BED CONTROL

Remote Single Bed Control is the ability to control a single tanning bed from a remote location. T-Max 3A at the remote location is required for this configuration.

Wiring

Wire the Heartland Timer to the tanning bed. Apply power to the T-Max 3A as described in their respective User's Guides.

Run the provided modular cable from the tanning room to the remote T-Max 3A or T-Max 1A. Connect the modular cable to one of the RJ-22 ports on the Heartland Timer and T-Max 1A or T-Max 3A (see RJ-22 ports for T-Max Series timers on page 16, figure B).

Configuration

Set the address on the Heartland Timer in the tanning room to 1. Set the address on the T-Max 3A to 0.0. For setting the delay refer to the T-Max 3A user's guide.

Note: When setting the address on the Heartland Timer in the tanning room, the power to the front desk T-Max 1A or 3A must be off.

Session Control

Starting a session

1. Press the Up and Down button on the T-Max 3A or the Set button on the T-Max 1A at the front desk until the session time is displayed. Time cannot be set from the Heartland Timer in the room.
2. Press the Start/Stop button on the front desk T-Max 1A or T-Max 3A to start the session.

If a delay other than 0 is set, the delay will count down. A period on the lower right corner of the display will flash rapidly. When the session starts, the period will flash at once per second rate. If a 0 delay is entered, the session will start immediately.

Pause during the Session

To pause the session press the Start/Stop button on the Heartland Timer in the tanning room. The flashing period on the lower right corner of the display will stop flashing and stay illuminated. To restart the session, press the Start/Stop button on the Heartland Timer in the tanning room. The period will continue flashing.

Note: The session time will continue to count down. The display will continue to update and reflect the remaining session time.

Canceling a session

To cancel a session, press both the Start/Stop and Up button on the T-Max 3A at the front desk simultaneously. If you are using a T-Max 1A, press the Start/Stop and the Set buttons simultaneously. The session cannot be canceled from the Heartland Timer.

USING THE HEARTLAND TIMER WITH A T-MAX MANAGER OR T-MAX MANAGER/PLUS/PRO

If you are using Heartland Timers with a T-Max Manager or T-Max Manager/Plus, follow these instructions for proper operation:

1. Set the address on each Heartland Timer.
Note: If this is a first time installation, go through the quick installation procedure in Section 2 of the T-Max Manager or T-Max Manager/Plus user's guides. This will automatically set the address on the Heartland Timers and you will not need to set the addresses manually as described in the following steps. If you need to set the address on the Heartland Timer manually, be sure to set each Heartland Timer to a different address. No Heartland Timer should be set to address 00.
2. Connect each Heartland Timer together using a modular cable that conforms to the pinouts shown on Figure B. Connect T-Max Manager or T-Max Manager/Plus to the closest Heartland Timer in the line (refer to Figure C).

Note: Delay is controlled by the T-Max Manager, the T-Max Manager/Plus or the software you are using if you are using a computer. It is not necessary to set the delay on the Heartland Timer. Refer to the T-Max Manager or T-Max Manager/Plus User's Guide for operation.

OTHER FEATURES

Clean Room

Once a session time has elapsed, the display will show the session is over and this bed needs to be cleaned. To clear the clean room indication, press and hold the Up button on the Acclaim™hp Timer in the tanning room until the “0” appears. To disable the clean room feature, set parameter 9 to a 0.

Lamp Hours

To check and change Lamp Hours (or any other parameter).

TPI (Third Party Input) Mode

If you are using a FST or Database Series timers, you will need to place the Acclaim™hp Timer in the TPI mode.

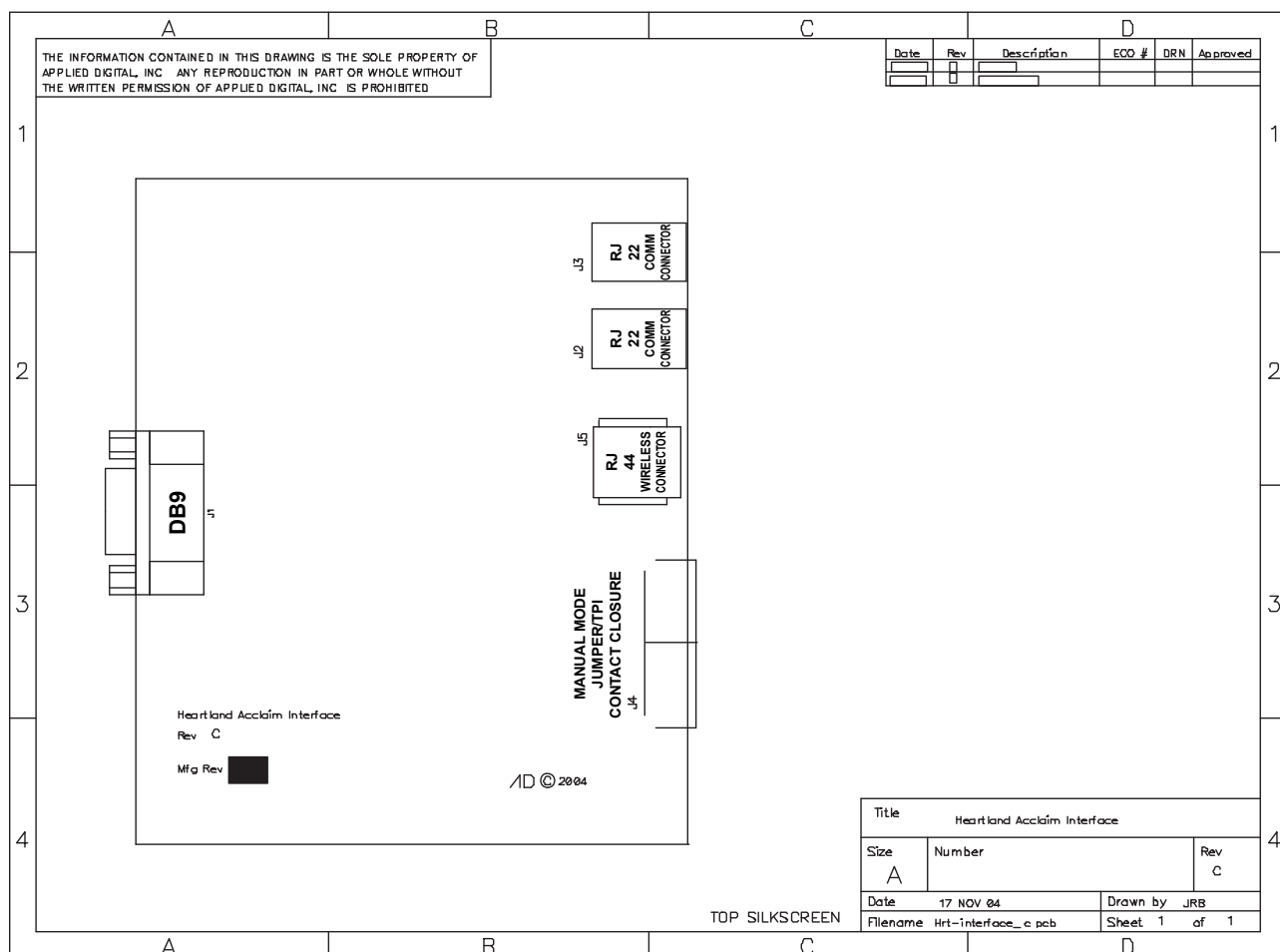
Connecting the TPI Input

1. Set Parameter 19 to a 1.
2. Connect the two contact wires from the in room start button from the FST or database timer system to the J4 connection shown on the interface board below.

Operation

When a session is started, the closed contact will be applied to the TPI input. The display on the Acclaim™hp Timer will show the maximum time and count down. When the session ends, the closed contact will be removed from the TPI input and the bed will turn off. Any remaining session time showing on the Acclaim™hp Timer will be eclipsed.

Note: The Acclaim™hp timer can not be used as a stand alone timer in the TPI mode.



COOL DOWN MODE

Cool down mode is the time the bed needs to cool down after a session has ended. The Factory default setting is 10 minutes.

Once the bed has been cleaned a new session can be sent to the Acclaim™hp timer while in cool down mode.

Figure A - Front View Of The Acclaim™hp Timer Display



Figure B - Power Board Location

12' modular cable to power board

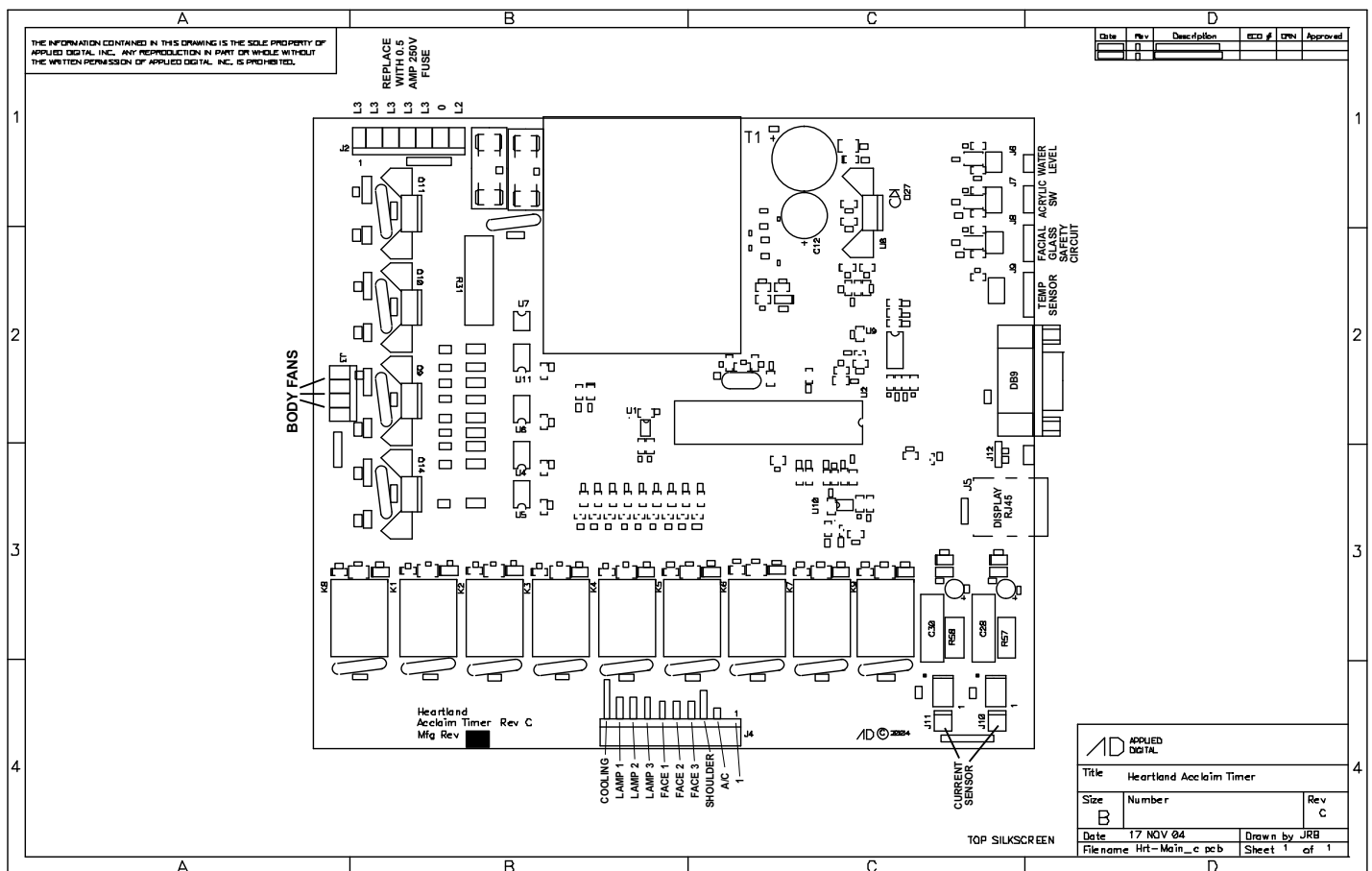
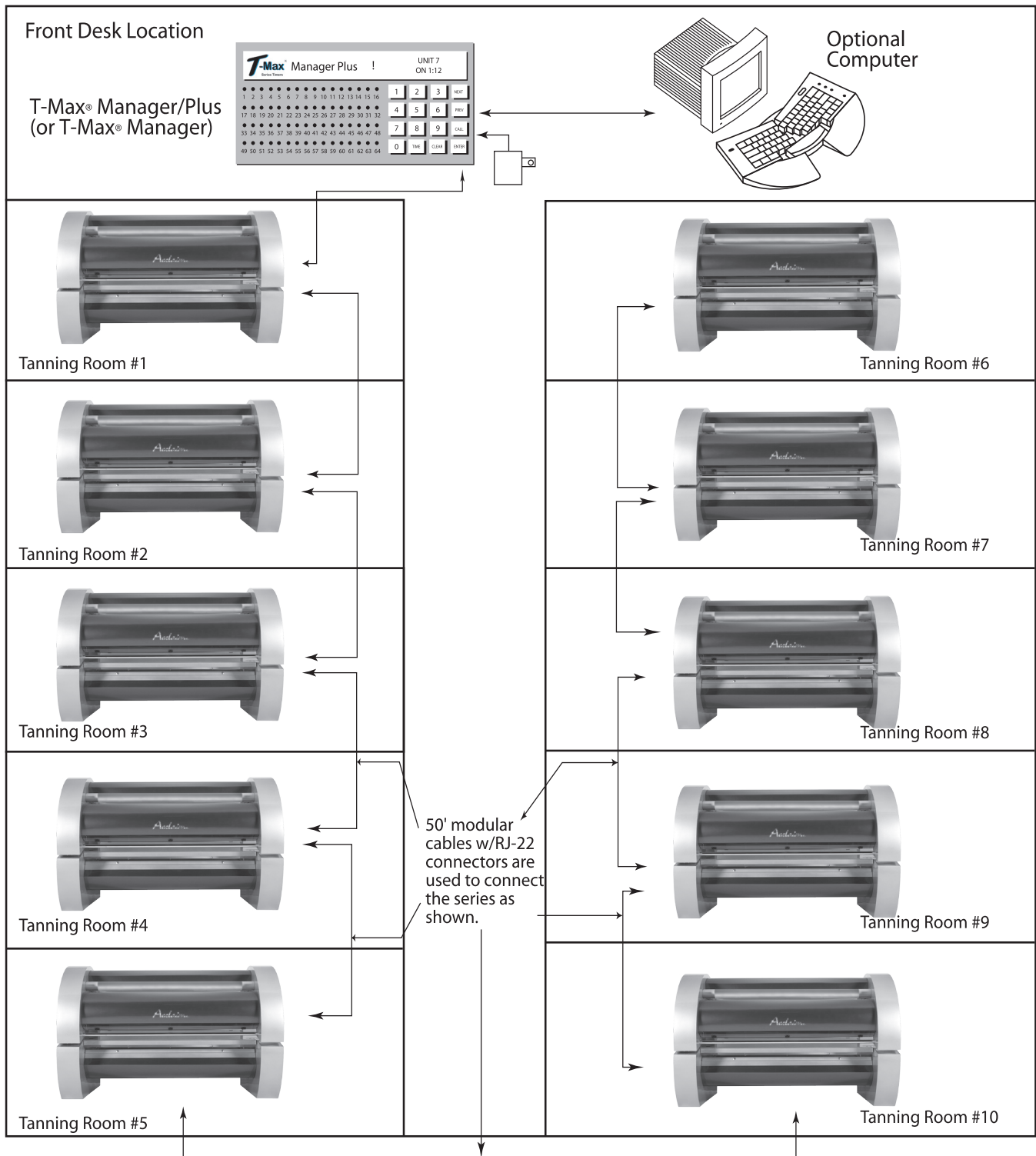


FIGURE C - Connecting the Heartland Timer to a T-Max[®] Series



It does not matter in which order the rooms are connected. The only requirement is that there is a continuous connection from the T-Max[®] Manager through each room in the T-Max[®] Series daisy-chain.

WARNING ELECTRICIAN

This unit utilizes 3 phase motors that are phase sensitive.

Failure to correctly connect to each phase will cause the motors to run in reverse. This will cause the unit to overheat and warp acrylics.

This will void the warranty on the product. Make connections following the legend below.

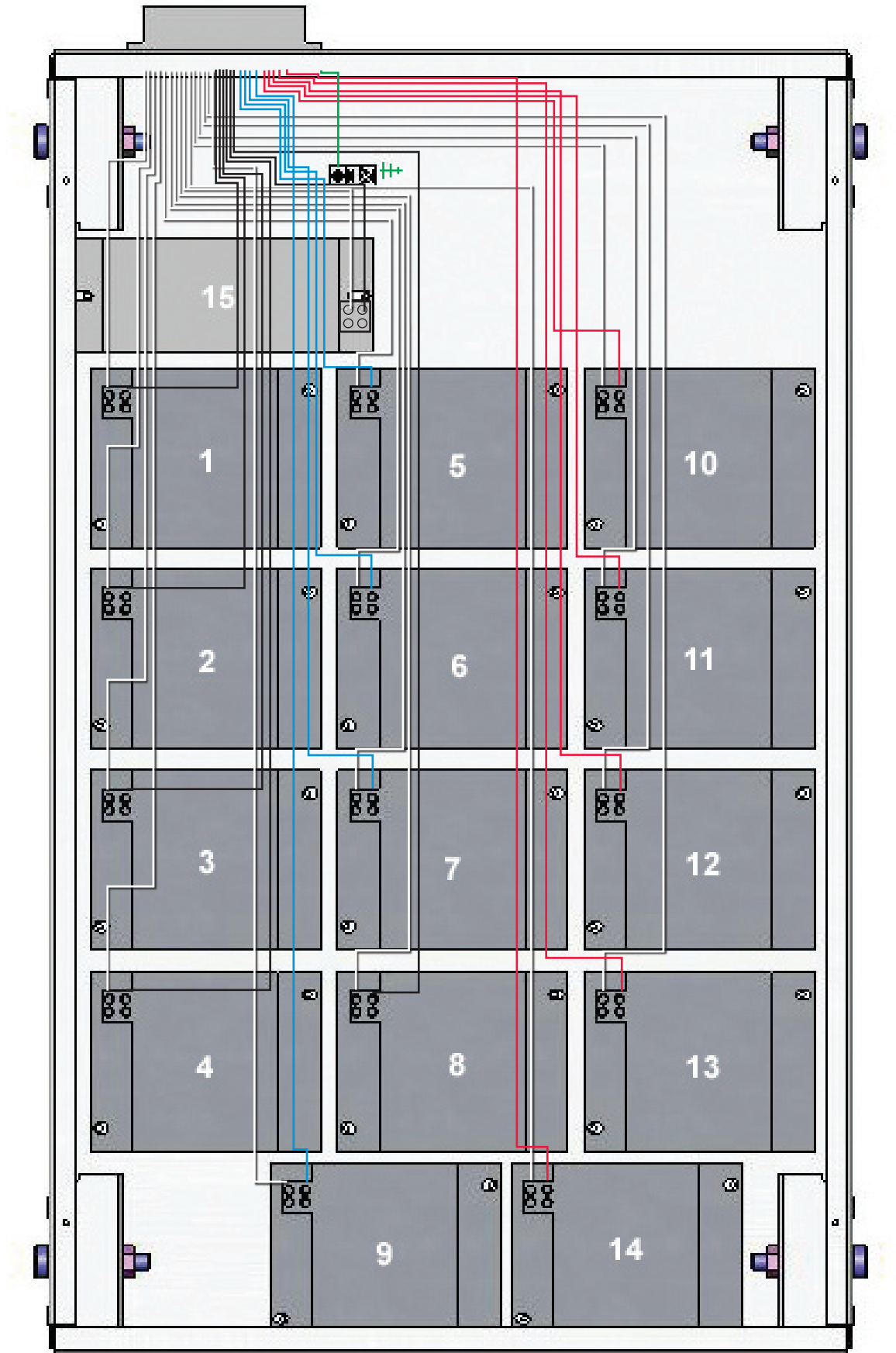
L1 - BLACK LEAD

L2 - RED LEAD

L3 - BLUE LEAD

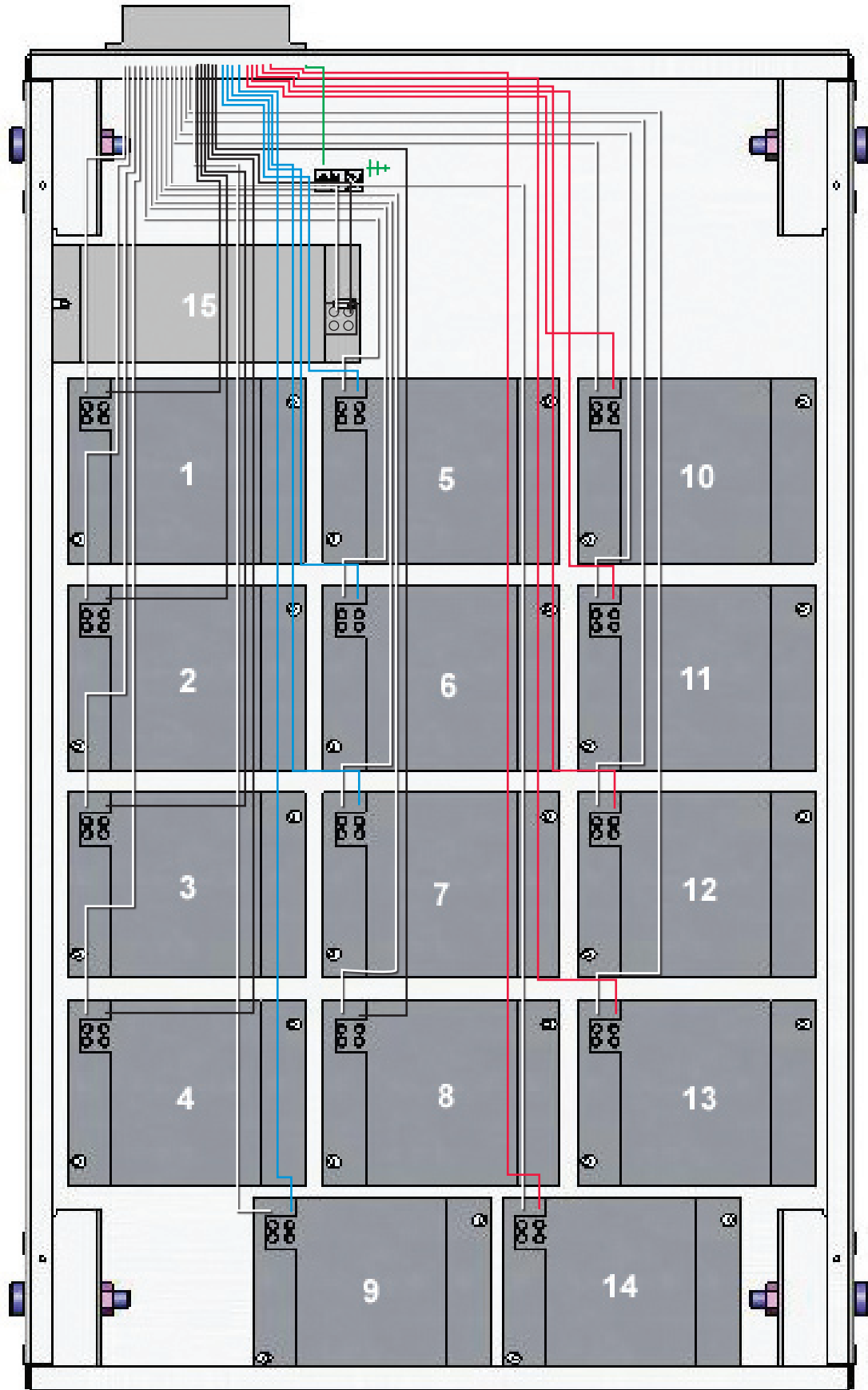
WIRING DIAGRAM

Auxillary Ballast Tray #1



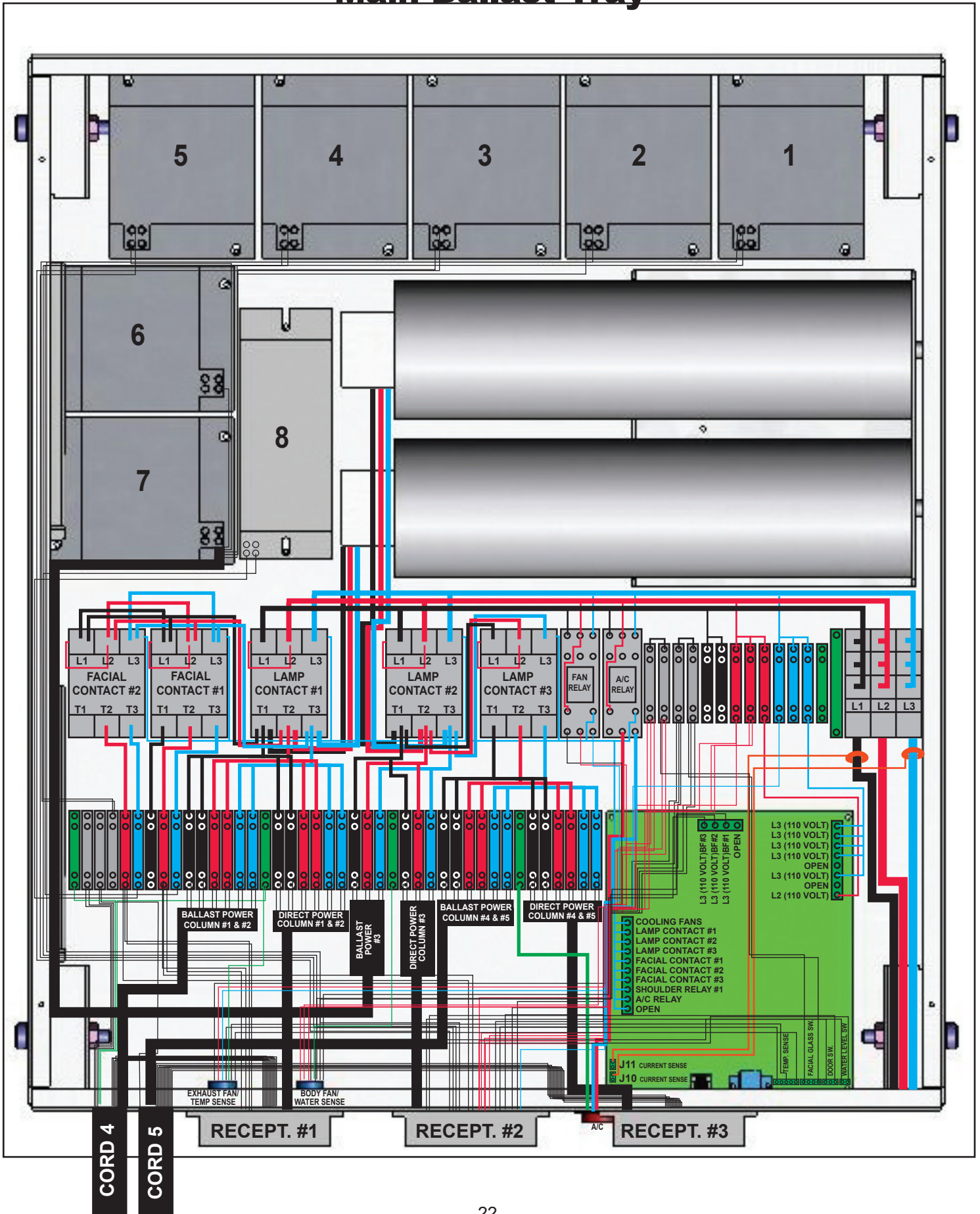
WIRING DIAGRAM

Auxillary Ballast Tray #2

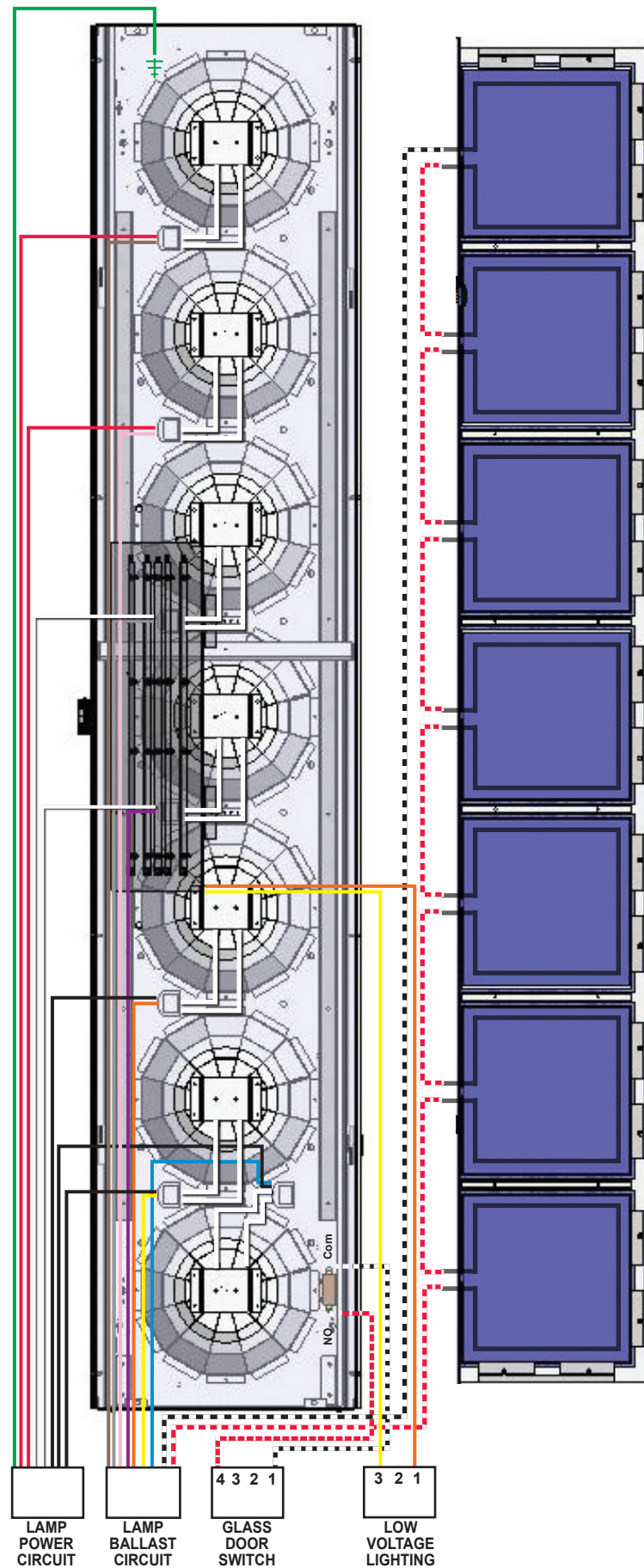


WIRING DIAGRAM

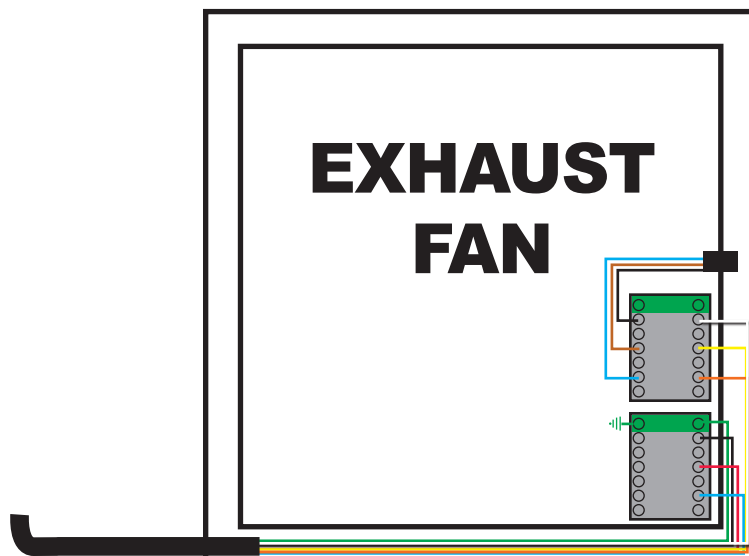
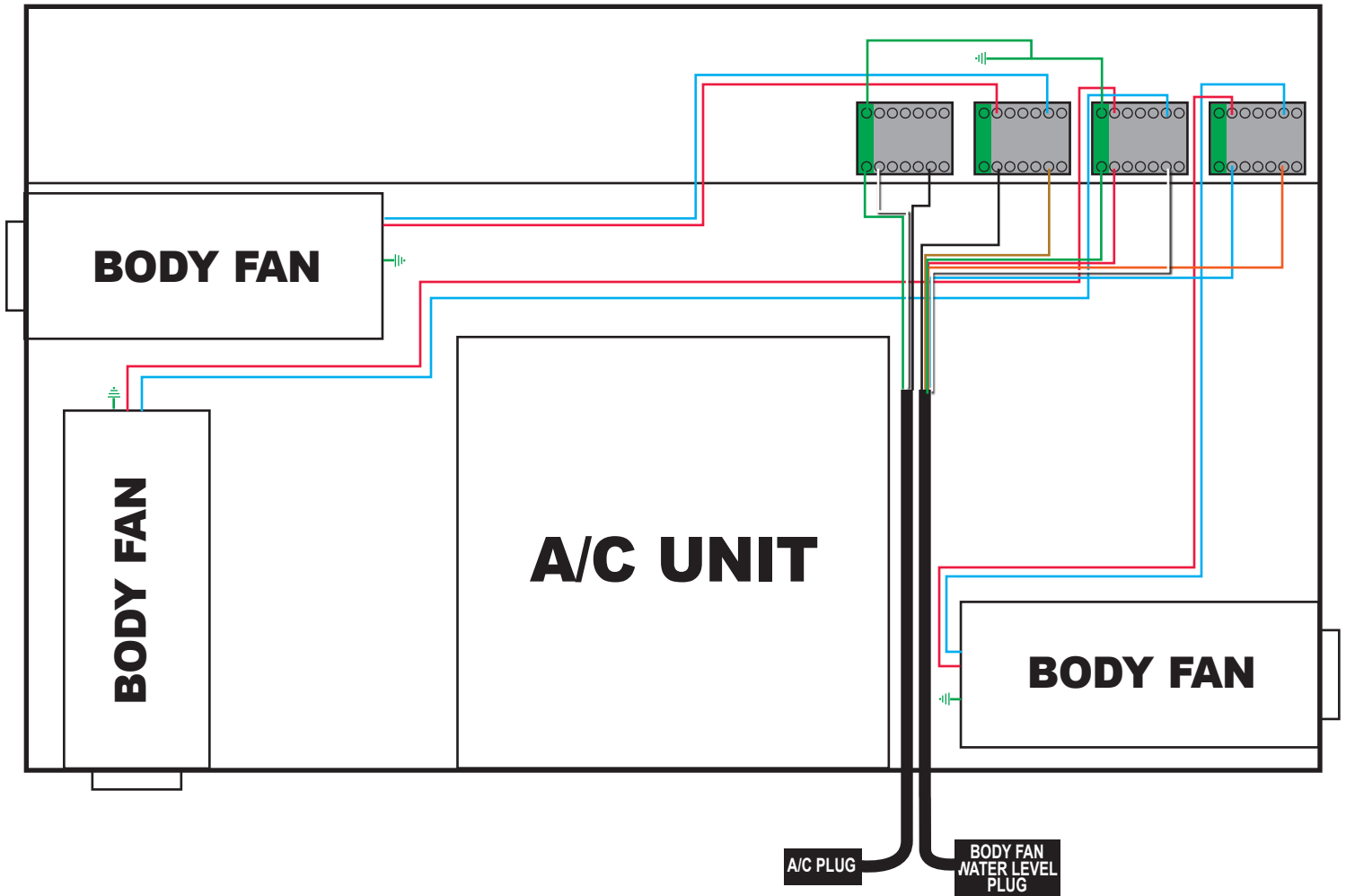
Main Ballast Tray



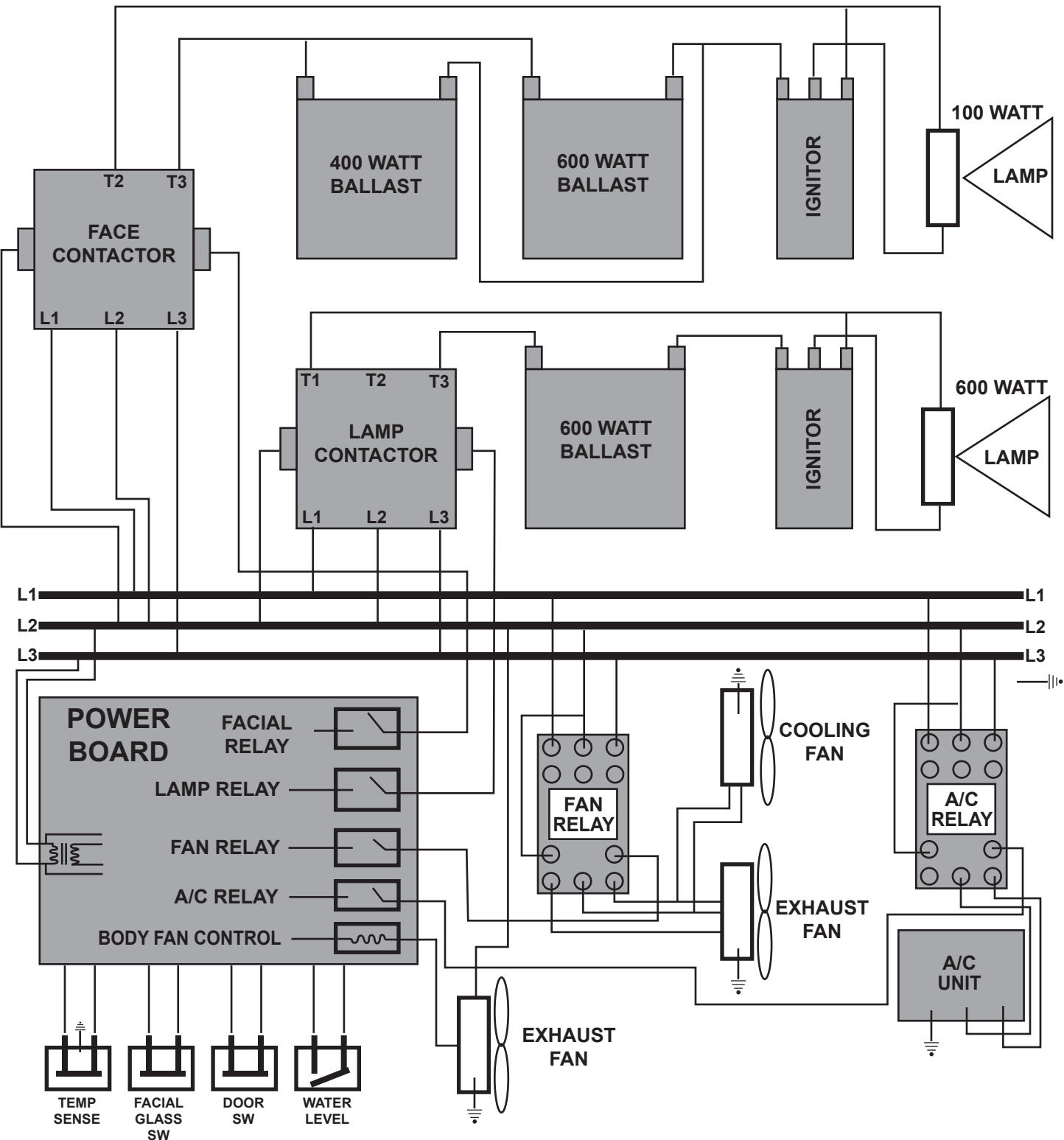
WIRING DIAGRAM



WIRING DIAGRAM



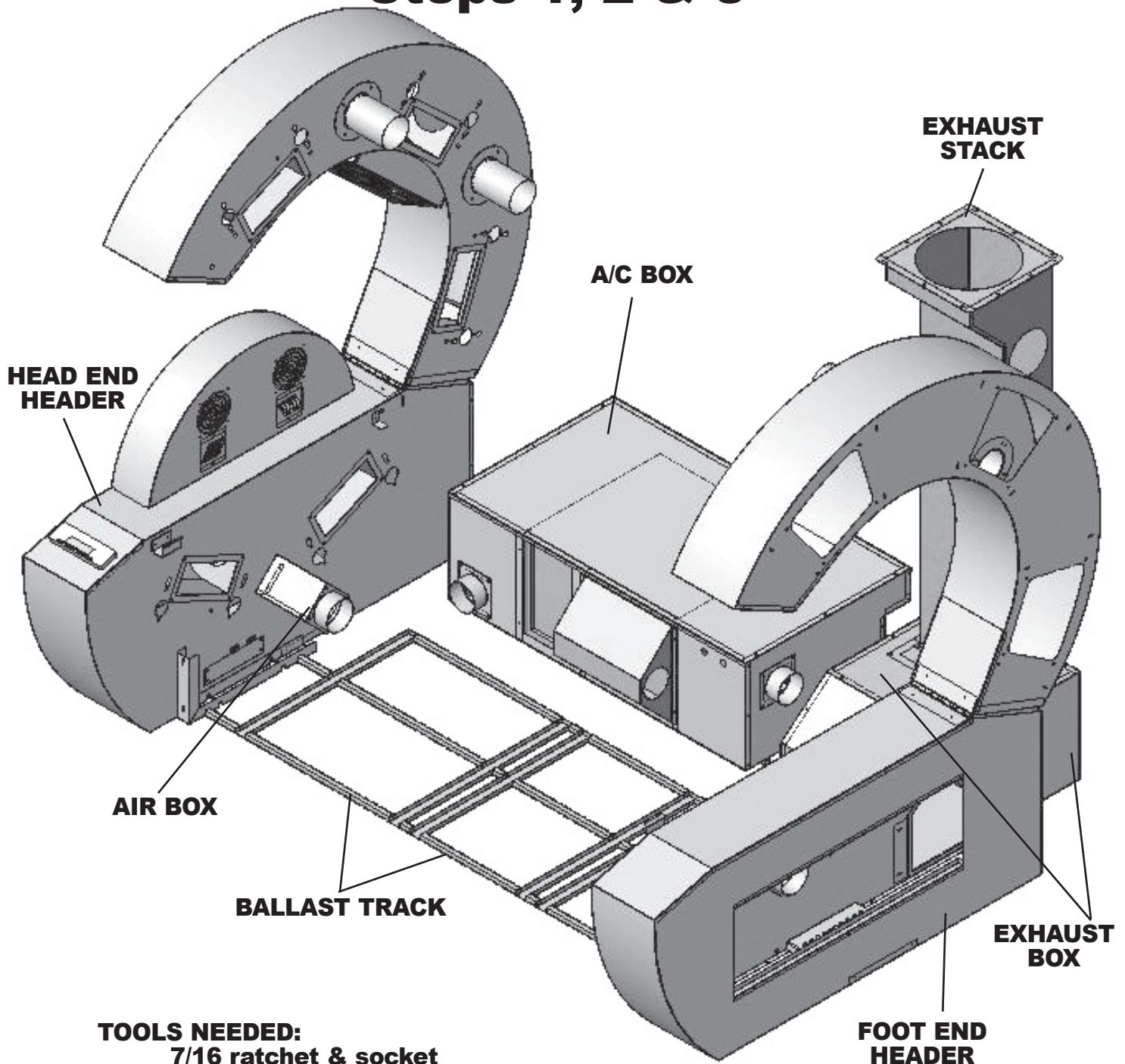
ELECTRICAL OVERVIEW



ASSEMBLY INSTRUCTIONS

ACCLAIM™ hp

Steps 1, 2 & 3



TOOLS NEEDED:

7/16 ratchet & socket
#2 phillips screwdriver/screw gun
flat head screwdriver

STEP 1. Place head end header, foot end header and ballast track in desired position within room.

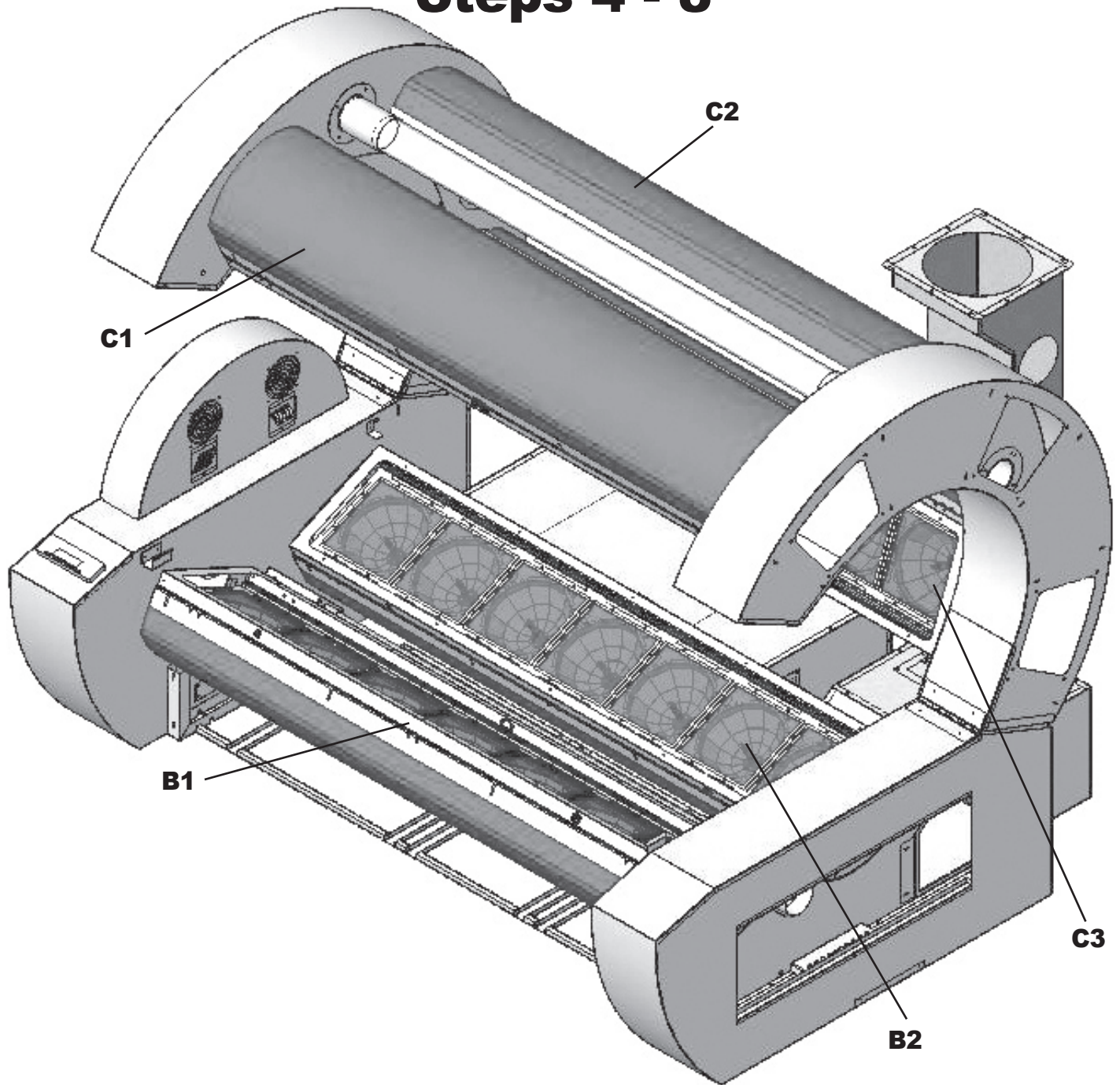
STEP 2. Attach exhaust box to foot end header.

STEP 3. Align A/C box with air box on head end header.

ASSEMBLY INSTRUCTIONS

ACCLAIM™ hp

Steps 4 - 8



STEP 4. Attach column C3 to canopy headers using 8- 1/4" x 7/8" hex bolts.

STEP 5. Attach column C2 to canopy headers using 8 - 1/4" x 7/8" hex bolts.

STEP 6. Attach column B2 to canopy headers using 8 - 1/4" x 7/8" hex bolts.

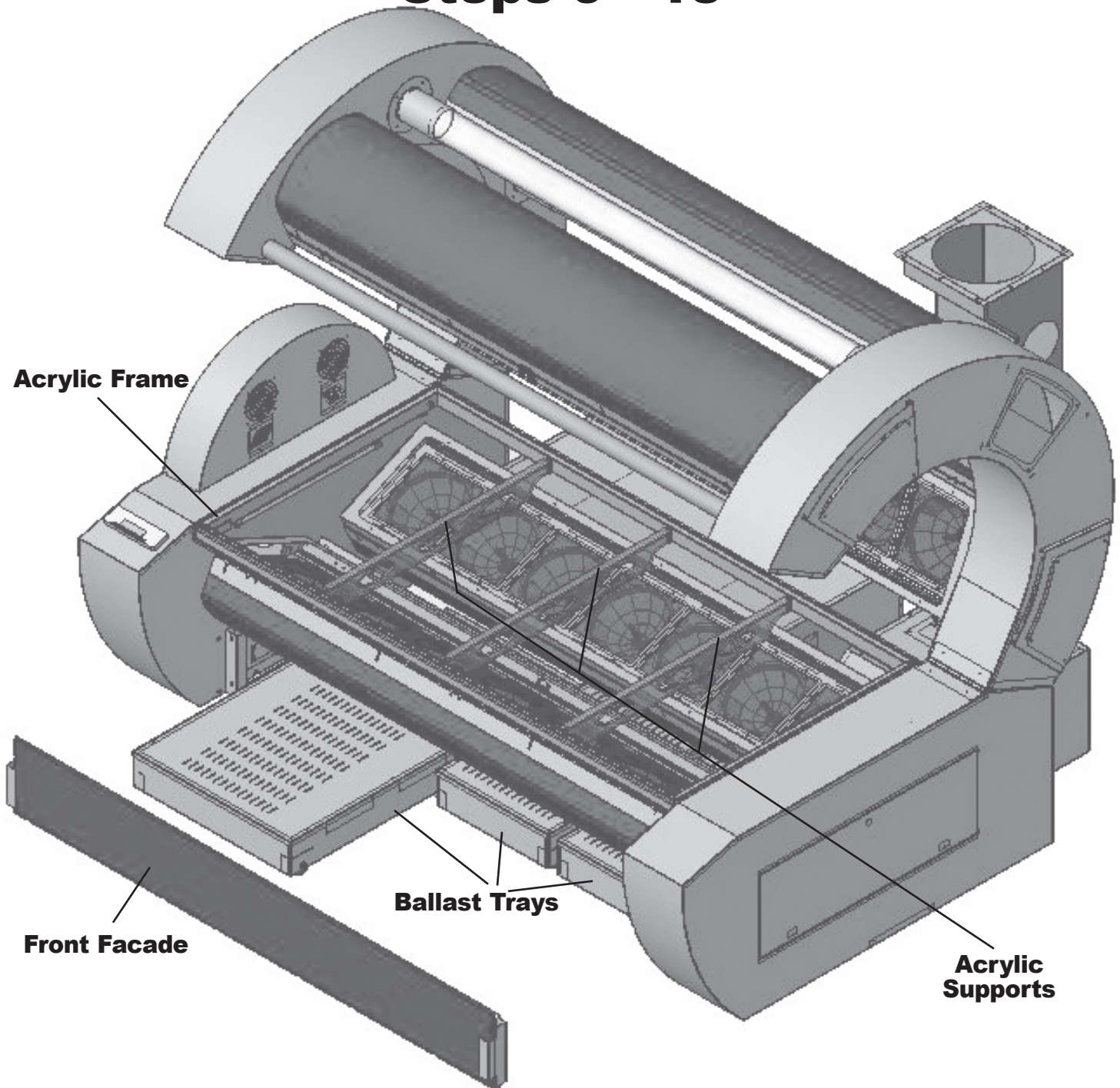
STEP 7. Attach column C1 to canopy headers using 8 - 1/4" x 7/8" hex bolts.

STEP 8. Attach column B1 to canopy headers using 8 - 1/4" x 7/8" hex bolts.

ASSEMBLY INSTRUCTIONS

ACCLAIM™ hp

Steps 9 - 13



STEP 9. Install acrylic frame into head and foot headers.

STEP 10. Install bench acrylic supports into acrylic frame.

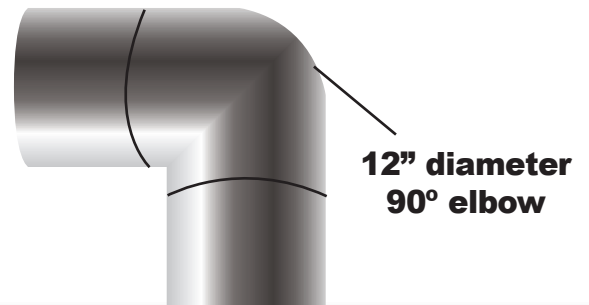
STEP 11. Install bench acrylic onto bench acrylic frame.

STEP 12. Install ballast trays into ballast track. Attach corresponding cords.

STEP 13. Install front facade onto ballast track assembly.

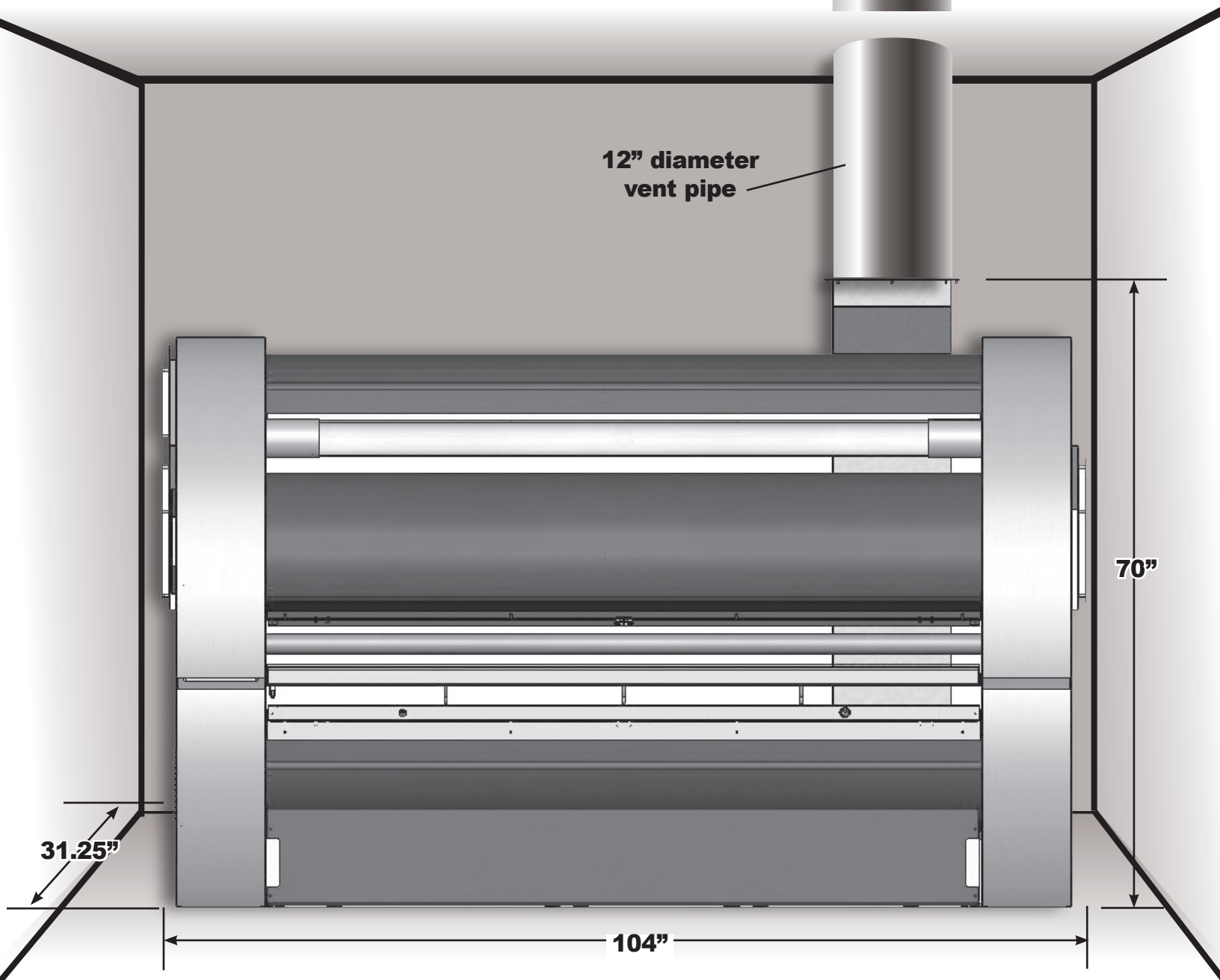
VENTING RECOMMENDATIONS FOR A ROOM WITH DROP CEILING OR PERMANENT CEILING

We recommend using rigid
metal vent pipe & fittings.



12" diameter
90° elbow

12" diameter
vent pipe

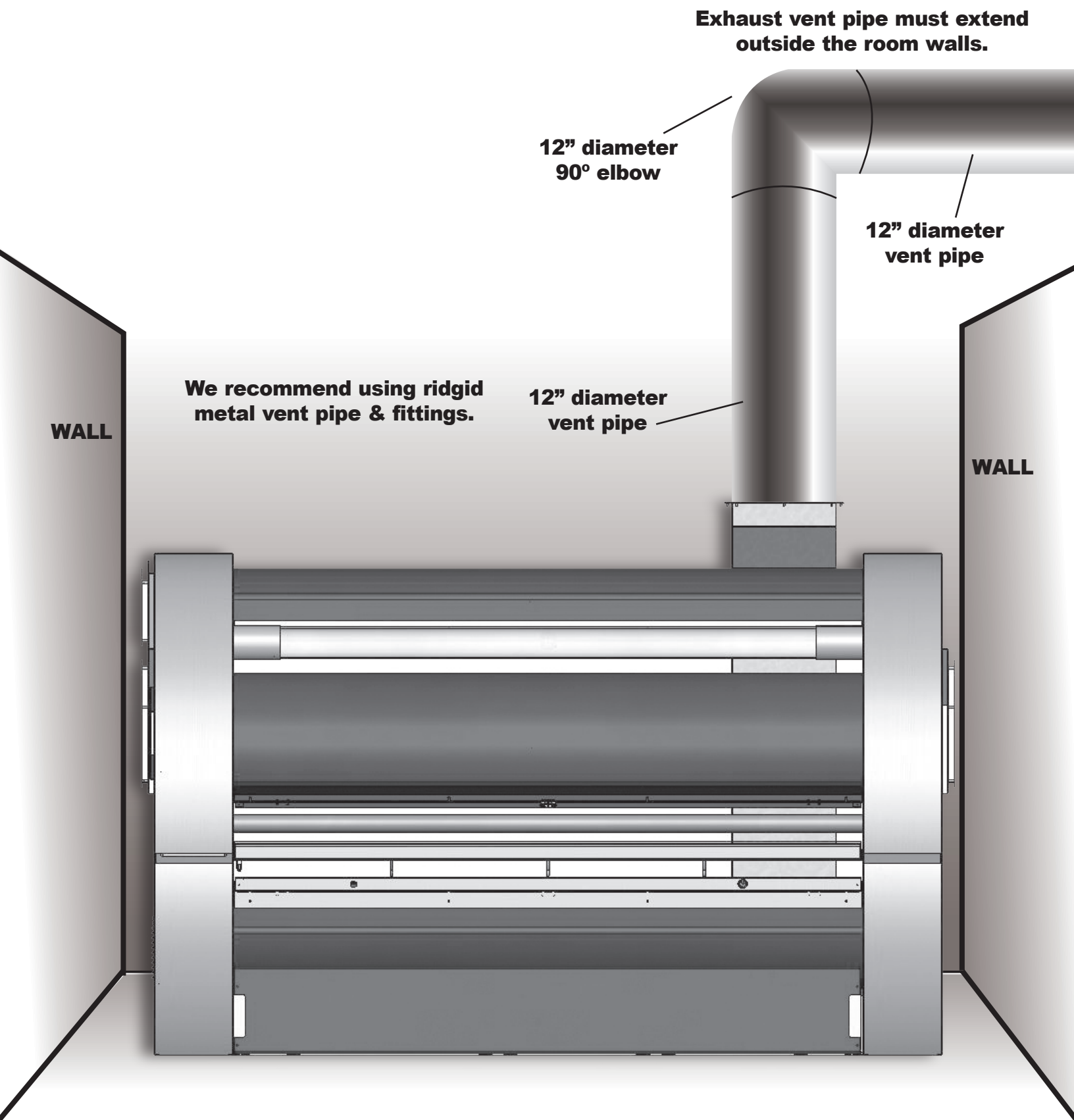


70"

31.25"

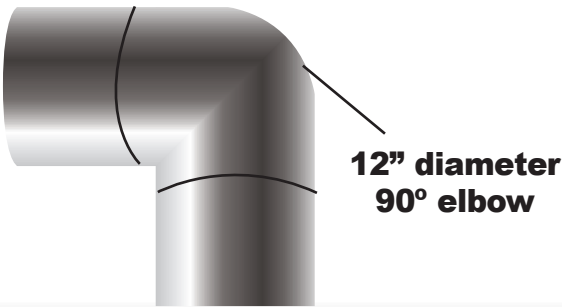
104"

VENTING RECOMMENDATIONS FOR A ROOM WITH AN OPEN CEILING



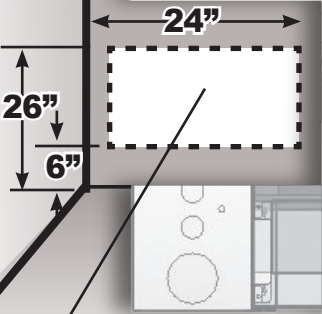
REQUIRED ROOM SPECIFICATIONS

We recommend using rigid metal vent pipe & fittings.



ROOM
DEPTH
120"
MINIMUM

12" diameter
vent pipe



A/C BOX
BOX SITS FLUSH AGAINST
BACK WALL

15"

ROOM WIDTH 144" MINIMUM

Consult national & local codes
for minimum distance requirements

LIMITED WARRANTY

Heartland Tanning, Inc. warrants its products to be free from defects in materials and workmanship under intended normal use as described in the unit's Operation and Instruction Manual, for a period of three (3) years from date of sale.

This Limited Warranty applies only to the original purchaser of the equipment through Heartland Tanning, Inc. or its authorized dealer or distributor, and is not transferable.

Heartland Tanning, Inc.'s obligations under this warranty are limited to repair or replacement of any defective part without charge for that part to the original purchaser, with the following exceptions:

- A. Tanning lamps are warranted against defects for a period of sixty (60) days from date of sale.
- B. Three (3) year Limited Warranty on parts. Only parts obtained through Heartland Tanning, Inc., its authorized dealers or distributors may be used. Transportation cost for parts shipped to the consumer and the return of defective parts to Heartland Tanning, Inc. are not included
- C. Labor will be furnished without charge for ninety (90) days from the date of purchase only. All labor and related charges must be authorized by Heartland Tanning, Inc. prior to start of repairs, and must coincide with Heartland Tanning, Inc. established rates and time allotment policy.
- D. All fans are warranted against defects for a period of three (3) years from date of sale.
- E. Timer system warranted for one (1) year.
- F. Acrylic, warranted for twelve (12) months.
- G. Springs warranted for twelve (12) months.
- H. Filter Glass warranted for twelve (12) months.

It is imperative that the original customer completes and returns the enclosed warranty card within ten (10) days after purchase to insure valid registration and coverage for potential claims.

If the warranty card is not registered, proof of purchase from Heartland Tanning, Inc. or its authorized dealer or distributor will be required prior to any consideration on warranty claims. This could result in service delays.

This warranty is extended to the individual or legal entity, whose name appears on the warranty registration card filed with Heartland Tanning, Inc., or whose name appears on the original sale document and may not be transferred to any other individual or legal entity.

This warranty does not apply to any failure of the product or any parts of the product due to alterations, modifications, misuse, abuse, accident, improper maintenance, improper installation or if the serial number on the product has been removed, altered, or defaced. Adequate packaging must be used for returned goods to prevent freight damage.

THIS WARRANTY IS EXPRESSLY IN LIEU OF ALL OTHER WARRANTIES, EXPRESSED OR IMPLIED, INCLUDING THE WARRANTIES OF MERCHANTABILITY AND HEARTLAND TANNING, INC. NO PERSON, FIRM OR CORPORATION IS AUTHORIZED TO OBLIGATE HEARTLAND TANNING, INC. FOR ANY LIABILITY IN CONNECTION WITH THE SALE OR USE OF THESE GOODS.

This warranty gives you specific legal rights, and you may also have other rights which vary from state to state.

NOTICE: Any misuse, abuse, modifications, alteration, improper installation, etc. of this product or its intended use will subject said party to direct responsibility for any and all consequences resulting from such action. Furthermore, such actions will void all warranties and may relieve Heartland Tanning, Inc. of any liabilities relating to said product.



4251 N.E. Port Drive • Lee's Summit, MO 64064 • 800-554-8268



Owner & Assembly Manual

Les Spécifications Françaises Enclos

